



**Noise Monitoring Result**

**Day Time (0700 - 1900hrs on normal weekdays)**

Location: M1a - Harbour Road Sports Centre

Date	Time	Weather	Measurement Noise Level			Baseline Level	Construction Noise Level	Limit Level
			Leq	L10	L90	Leq	Leq	Leq
Unit: dB(A), (30-min)								
07/03/13	10:20	Fine	71.9	74.5	67.5	72	72	75
12/03/13	10:10	Fine	73.3	76.0	68.5	72	67	75
19/03/13	10:00	Fine	74.3	77.0	70.0	72	70	75
26/03/13	10:00	Cloudy	75.5	79.0	69.5	72	73	75

Location: M2b - Noon-day gun area

Date	Time	Weather	Measurement Noise Level			Baseline Level	Construction Noise Level	Limit Level
			Leq	L10	L90	Leq	Leq	Leq
Unit: dB(A), (30-min)								
07/03/13	11:05	Fine	73.9	77.0	70.0	68	73	75
12/03/13	10:50	Fine	70.1	70.5	67.5	68	67	75
19/03/13	10:45	Fine	70.9	72.0	69.0	68	68	75
26/03/13	10:45	Cloudy	72.3	74.6	70.3	68	71	75

Location: M3a - Tung Lo Wan Fire Station

Date	Time	Weather	Measurement Noise Level			Baseline Level	Construction Noise Level	Limit Level
			Leq	L10	L90	Leq	Leq	Leq
Unit: dB(A), (30-min)								
07/03/13	13:00	Fine	67.0	68.5	64.5	69	67	75
12/03/13	11:30	Fine	67.7	69.5	69.0	69	68	75
19/03/13	13:10	Fine	68.0	68.5	65.0	69	68	75
26/03/13	11:28	Cloudy	68.6	69.5	66.0	69	69	75

Location: M4b - Victoria Centre

Date	Time	Weather	Measurement Noise Level			Baseline Noise Level	Construction Noise Level	Limit Level
			Leq	L10	L90	Leq	Leq	Leq
Unit: dB(A), (30min)								
07/03/13	13:45	Fine	74.3	76.0	71.0	67	73	75
12/03/13	13:00	Fine	70.1	71.5	68.0	67	67	75
19/03/13	13:50	Fine	75.8	77.5	70.5	67	75	75
26/03/13	13:00	Cloudy	71.3	73.0	68.0	67	69	75

Location: M5b - City Garden

Date	Time	Weather	Measurement Noise Level			Baseline Level	Construction Noise Level	Limit Level
			Leq	L10	L90	Leq	Leq	Leq
Unit: dB(A), (30min)								
07/03/13	14:30	Fine	69.9	73.0	66.5	68	65	75
12/03/13	13:45	Fine	71.9	73.5	67.5	68	70	75
19/03/13	14:35	Fine	74.3	75.5	71.5	68	73	75
26/03/13	14:45	Cloudy	72.5	75.5	69.0	68	71	75

Location: M6 - HK Baptist Church Henrietta Secondary School

Date	Time	Weather	Measurement Noise Level			Baseline Level	Construction Noise Level	Limit Level
			Leq	L10	L90	Leq	Leq	Leq
Unit: dB(A), (30-min)								
07/03/13	15:10	Fine	73.9	75.0	72.0	71	71	70
12/03/13	14:25	Fine	74.6	76.0	72.5	71	72	70
19/03/13	15:20	Cloudy	74.8	75.5	73.0	71	73	70
26/03/13	15:15	Cloudy	77.1	78.3	75.9	71	76	70



### Noise Monitoring Result

#### Day Time (0700 - 1900hrs on normal weekdays)

Location: M7e - International Finance Centre (Eastern End of Podium) (Reference Station)

Date	Time	Weather	Measurement Noise Level			Baseline Level	Construction Noise Level	Limit Level
			Leq	L10	L90	Leq	Leq	Leq
Unit: dB(A), (30-min)								
07/03/13	9:00	Fine	68.4	70.0	65.5	67	63	N/A
12/03/13	8:35	Fine	72.0	73.5	69.0	67	70	N/A
19/03/13	8:35	Fine	70.8	72.5	64.0	67	69	N/A
26/03/13	8:35	Cloudy	69.3	71.4	66.9	67	66	N/A

Location: M7w - International Finance Centre (Western End of Podium)

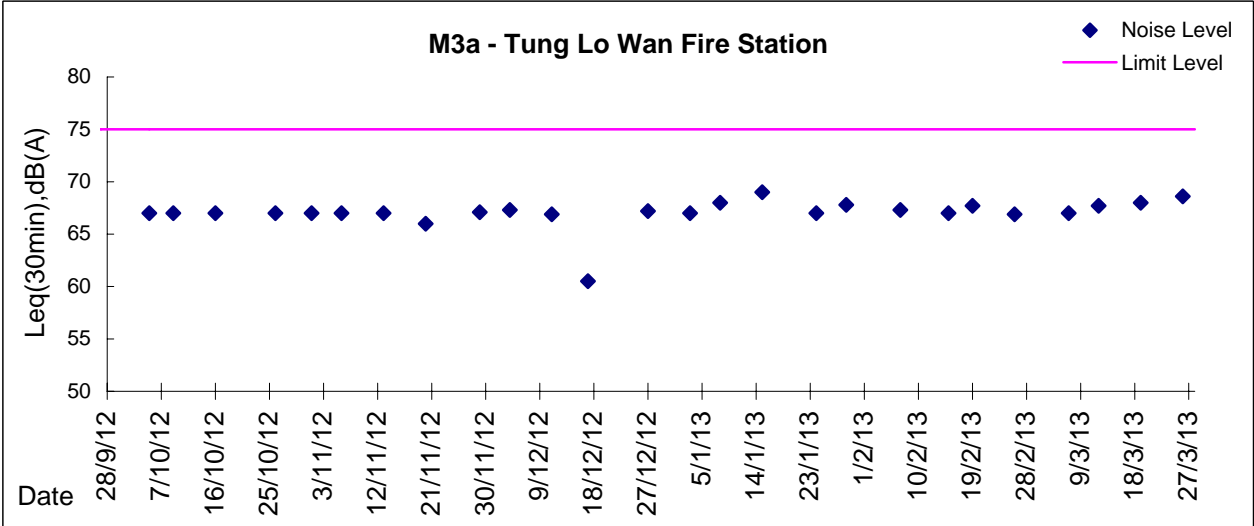
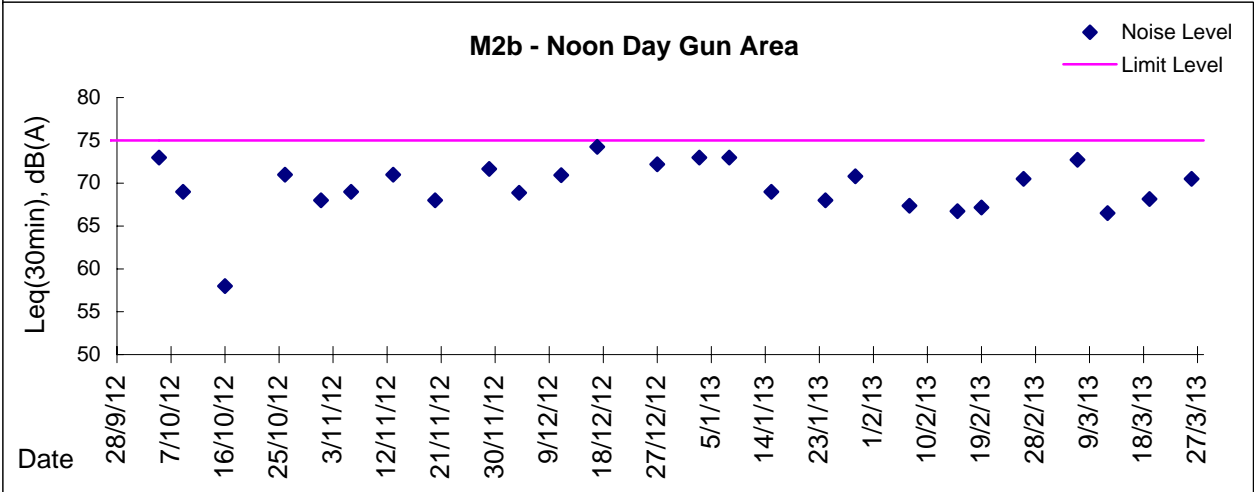
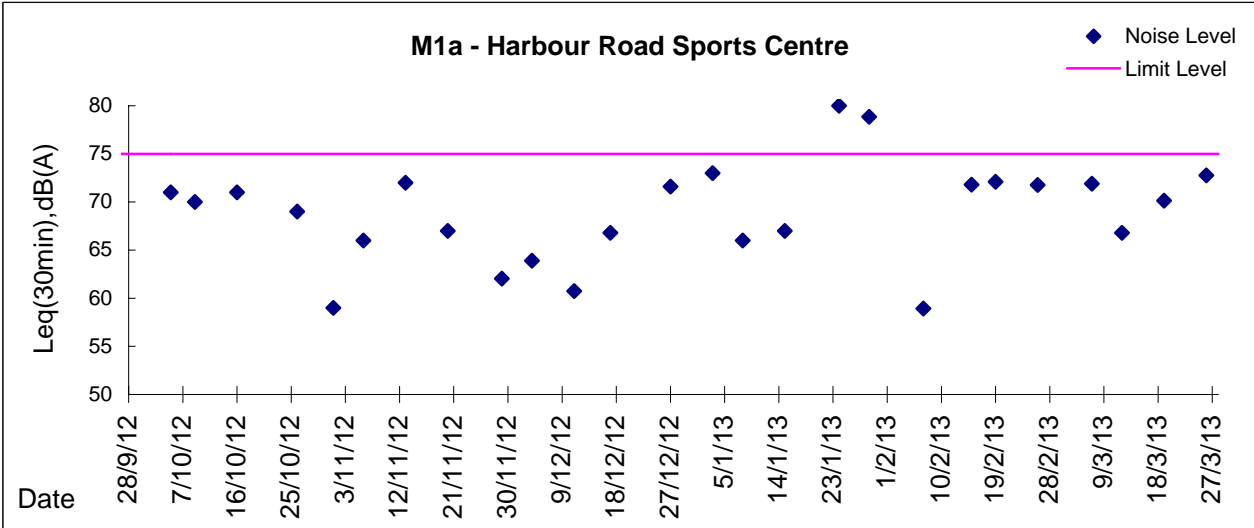
Date	Time	Weather	Measurement Noise Level			Baseline Level	Construction Noise Level	Limit Level
			Leq	L10	L90	Leq	Leq	Leq
Unit: dB(A), (30-min)								
07/03/13	8:40	Fine	67.6	69.0	65.5	69	68	75
12/03/13	8:00	Fine	66.1	68.0	63.0	69	66	75
19/03/13	8:00	Fine	67.4	69.5	62.5	69	67	75
26/03/13	8:00	Cloudy	65.7	67.5	60.5	69	66	75

Location: M8 - City Hall

Date	Time	Weather	Measurement Noise Level			Baseline Level	Construction Noise Level	Limit Level
			Leq	L10	L90	Leq	Leq	Leq
Unit: dB(A), (30-min)								
07/03/13	9:30	Fine	61.4	63.5	57.0	64	61	70
12/03/13	9:20	Fine	62.8	64.5	58.0	64	63	70
19/03/13	9:15	Fine	61.3	62.0	57.5	64	61	70
26/03/13	9:10	Cloudy	67.5	69.3	64.3	64	65	70



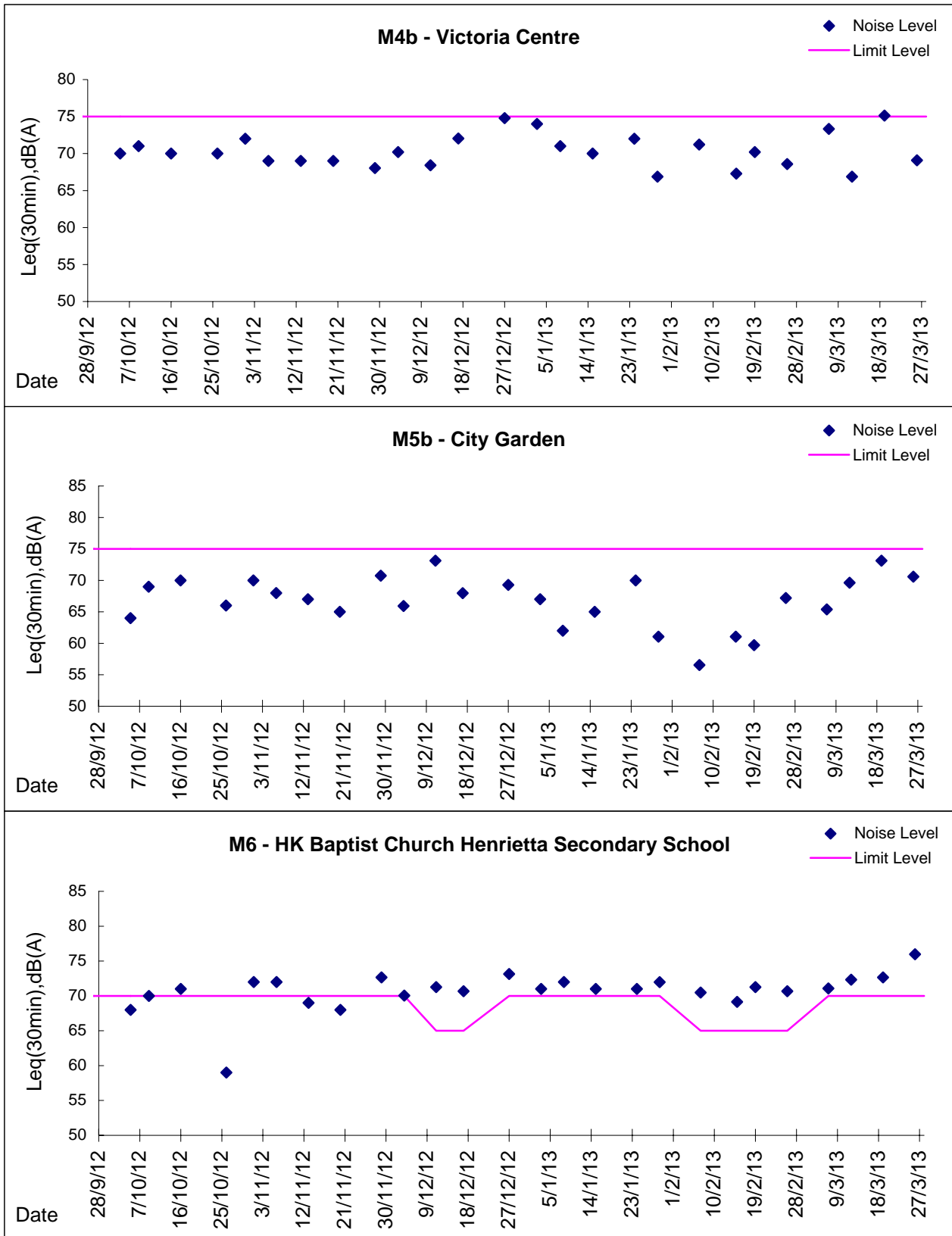
**Graphic Presentation of Noise Monitoring Result**  
**Day Time (0700 - 1900hrs on normal weekdays)**





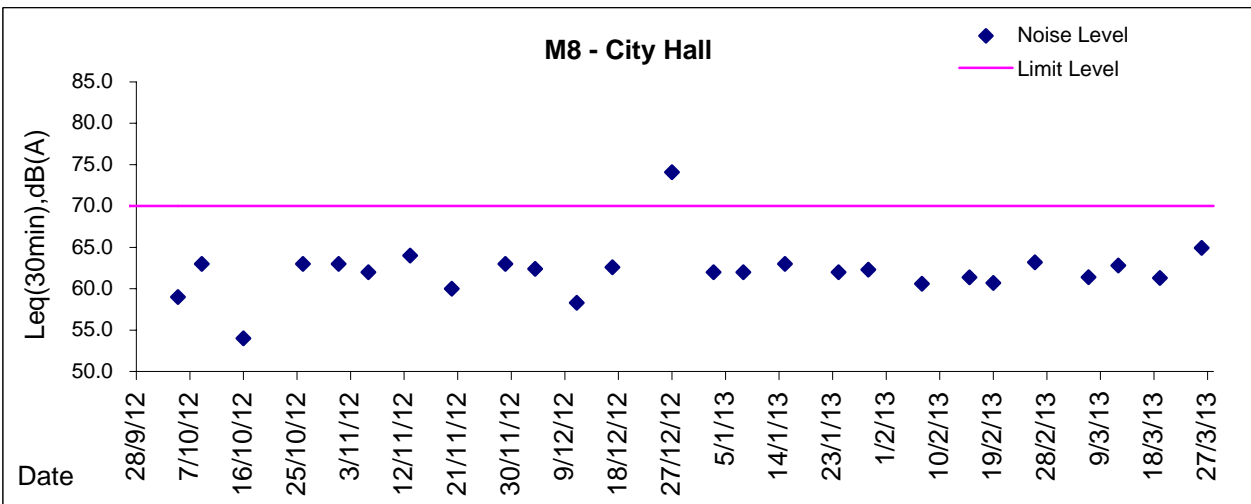
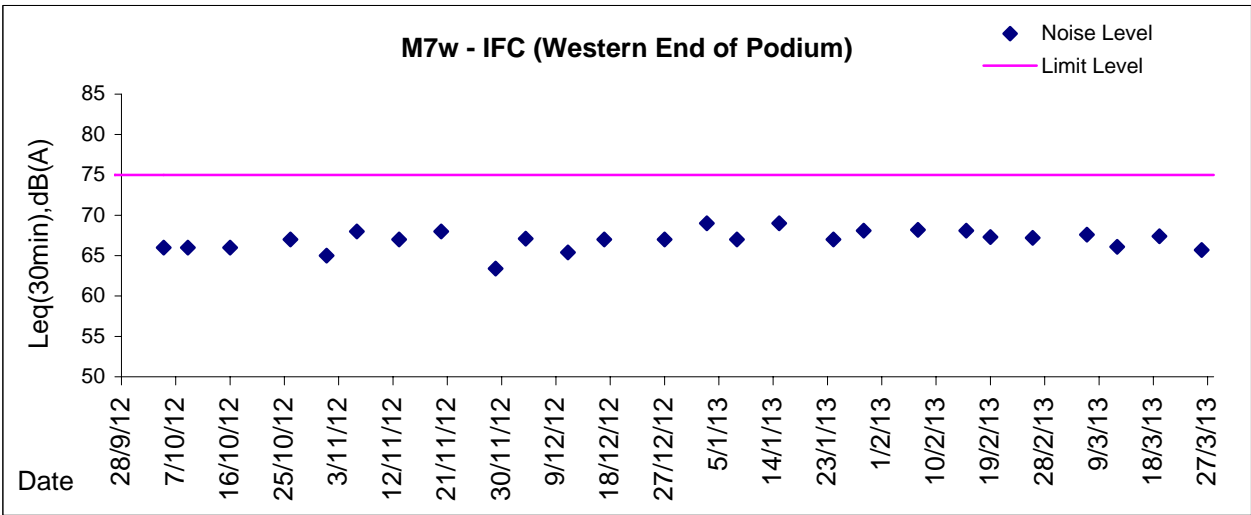
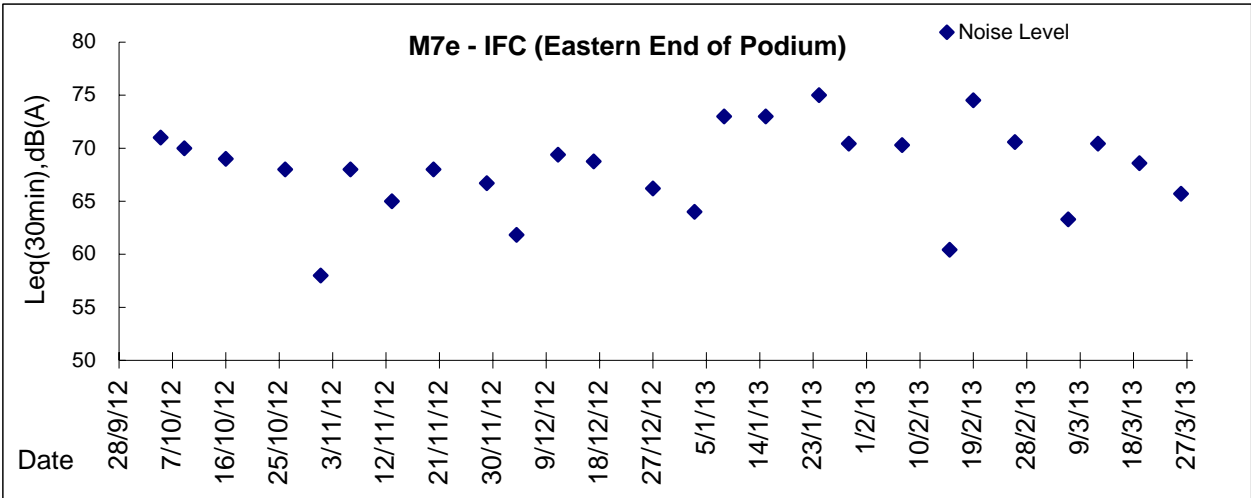
**Graphic Presentation of Noise Monitoring Result**

**Day Time (0700 - 1900hrs on normal weekdays)**





**Graphic Presentation of Noise Monitoring Result**  
**Day Time (0700 - 1900hrs on normal weekdays)**



\* Remark: M7e - IFC (Eastern End of Podium) is a reference monitoring station